



18 New Queen Street  
, Bristol, BS15 1DF

**Offers in excess of  
£250,000**



# 18 New Queen Street



## Description

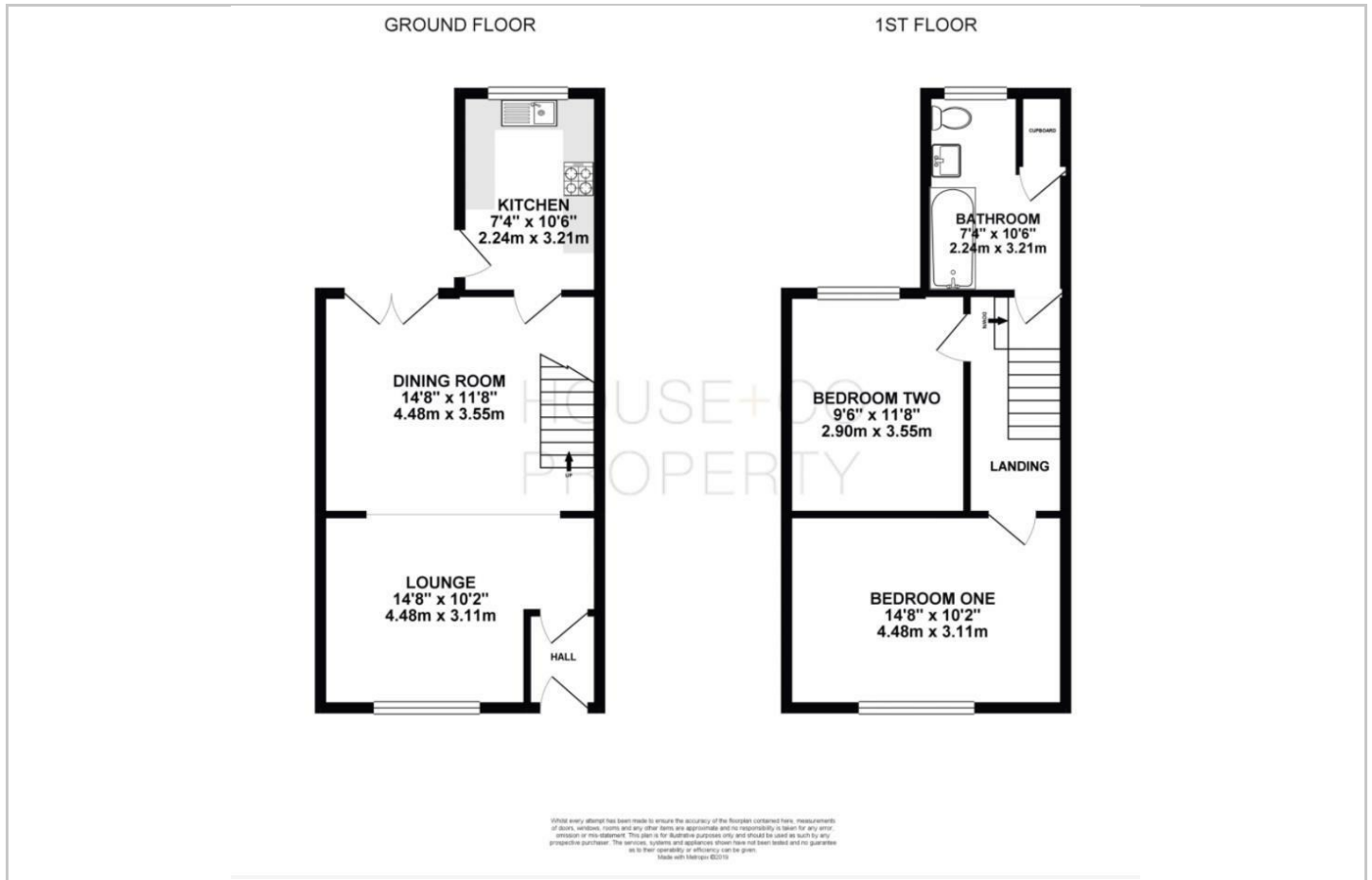
Set on the fringes of popular Kingswood and St George within walking distance of high streets, playing fields, good [Ofsted] schools, 5 minute walk to bus routes and local amenities sits this well presented and spacious two double bedroom end of terrace family home! The property comprises an entrance vestibule area leading to an open plan lounge/diner and U-shaped kitchen/breakfast to the ground floor, along with two double bedrooms [full-width master bedroom] and family bathroom to the first floor. Further benefits include; gas central heating, double glazing, westerly facing low maintenance rear garden, home improvements over the years such as; electrics installation, re-plastered, new carpets, overhauled roof and more...

- TWO DOUBLE BEDROOMS
- AMENITIES NEARBY
- DOUBLE GLAZING
- MODERN BATHROOM SUITE
- IDEAL FOR FIRST TIME BUYERS
- OPEN PLAN LIVING AREA
- GAS CENTRAL HEATING
- WEST FACING GARDEN SUITE

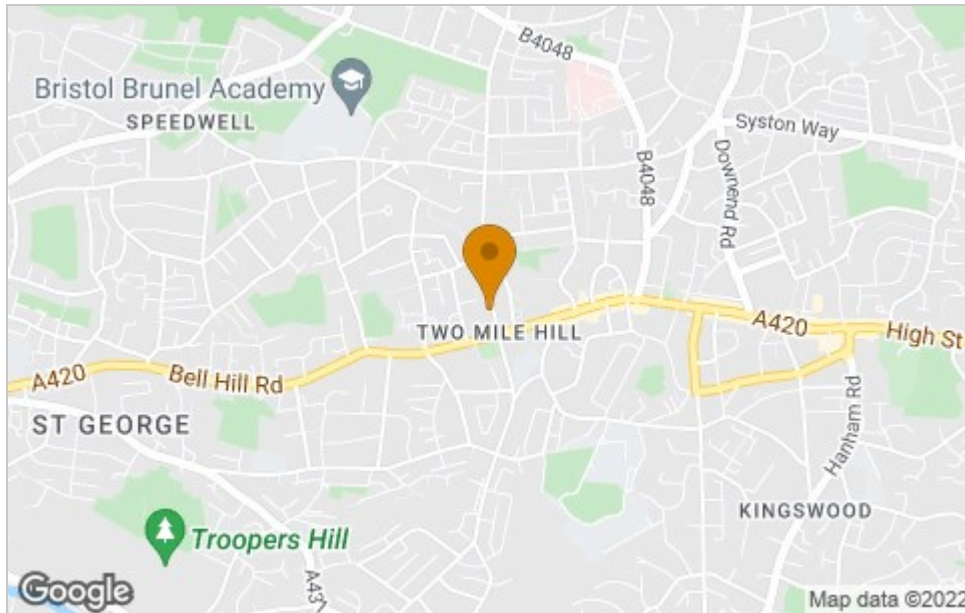




# Floor Plan



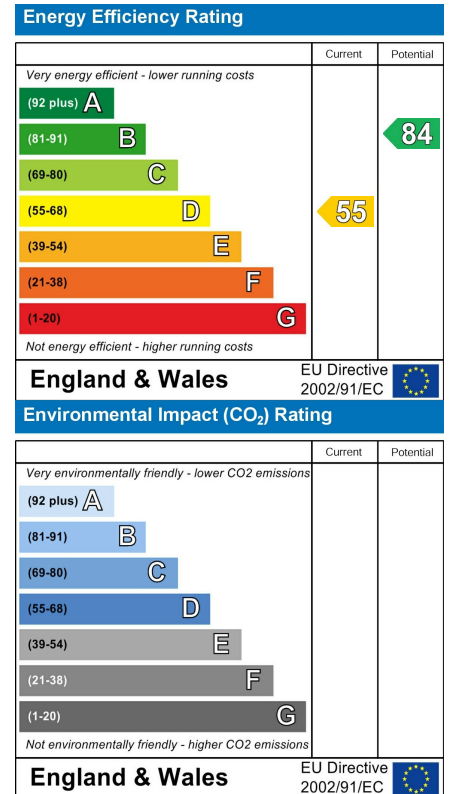
# Area Map



# Viewing

Please contact our House + Co Property (Sales) Office on 0117 907 0020 if you wish to arrange a viewing appointment for this property or require further information.

# Energy Efficiency Graph



These particulars, whilst believed to be accurate are set out as a general outline only for guidance and do not constitute any part of an offer or contract. Intending purchasers should not rely on them as statements of representation of fact, but must satisfy themselves by inspection or otherwise as to their accuracy. No person in this firm's employment has the authority to make or give any representation or warranty in respect of the property.