







20 Park Edge 359a Church Road

St. George, Bristol, BS5 8AQ

Asking price £180,000

 1  1  1  B

20 Park Edge 359a Church Road



Description

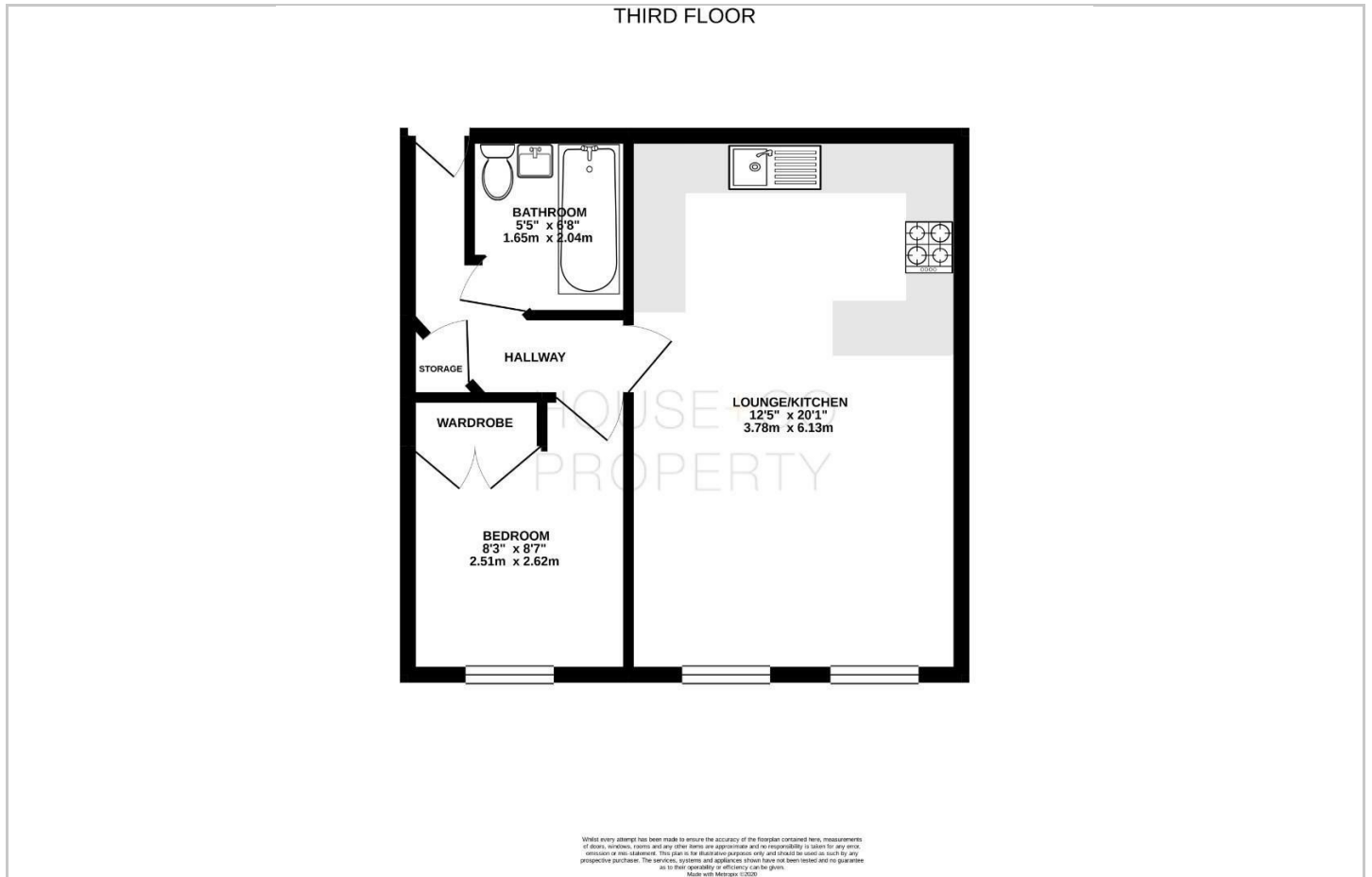
Beautifully presented top floor apartment located in St George next to St George's Park and on Church Road with it's many shops, cafes, delis and artisan bakery! This lovely flat offers spacious modern living and comprises of entrance hall with storage. The bright lounge benefits from dual aspect windows and is open plan to the modern kitchen with built in fridge freezer, cooker, dishwasher and washing machine. There is a good size double bedroom with fitted wardrobes and fresh bathroom with shower over the bath. Further benefits include allocated parking accessed by secure electric gate. This lovely home is in a prime spot to enjoy all that St George and Redfield has to offer! Please call to view!

- TOP FLOOR APARTMENT
- MODERN FITTED KITCHEN
- MODERN BATHROOM
- SECURE ELECTRIC GATE
- NEXT TO ST GEORGE'S PARK
- OPEN PLAN LOUNGE
- ONE DOUBLE BEDROOM
- ALLOCATED PARKING
- FITTED WARDROBES
- CHURCH ROAD AMENITIES NEARBY

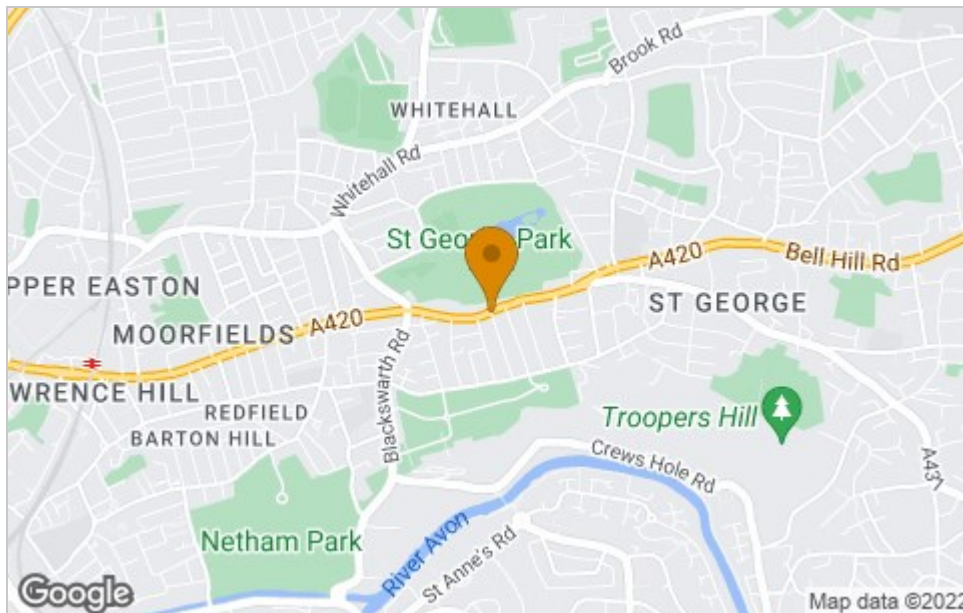




Floor Plan



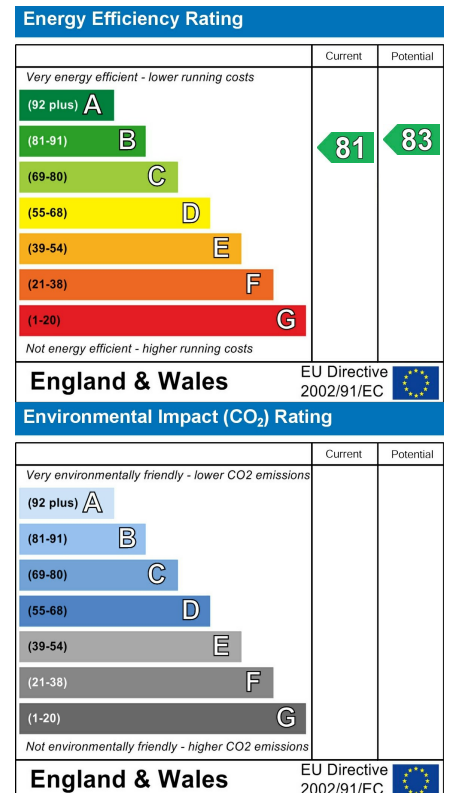
Area Map



Viewing

Please contact our House + Co Property (Sales) Office on 0117 907 0020 if you wish to arrange a viewing appointment for this property or require further information.

Energy Efficiency Graph



These particulars, whilst believed to be accurate are set out as a general outline only for guidance and do not constitute any part of an offer or contract. Intending purchasers should not rely on them as statements of representation of fact, but must satisfy themselves by inspection or otherwise as to their accuracy. No person in this firm's employment has the authority to make or give any representation or warranty in respect of the property.