



30 Snowberry Walk

St George, Bristol, BS5 7DG

Asking price £255,000



30 Snowberry Walk



Description

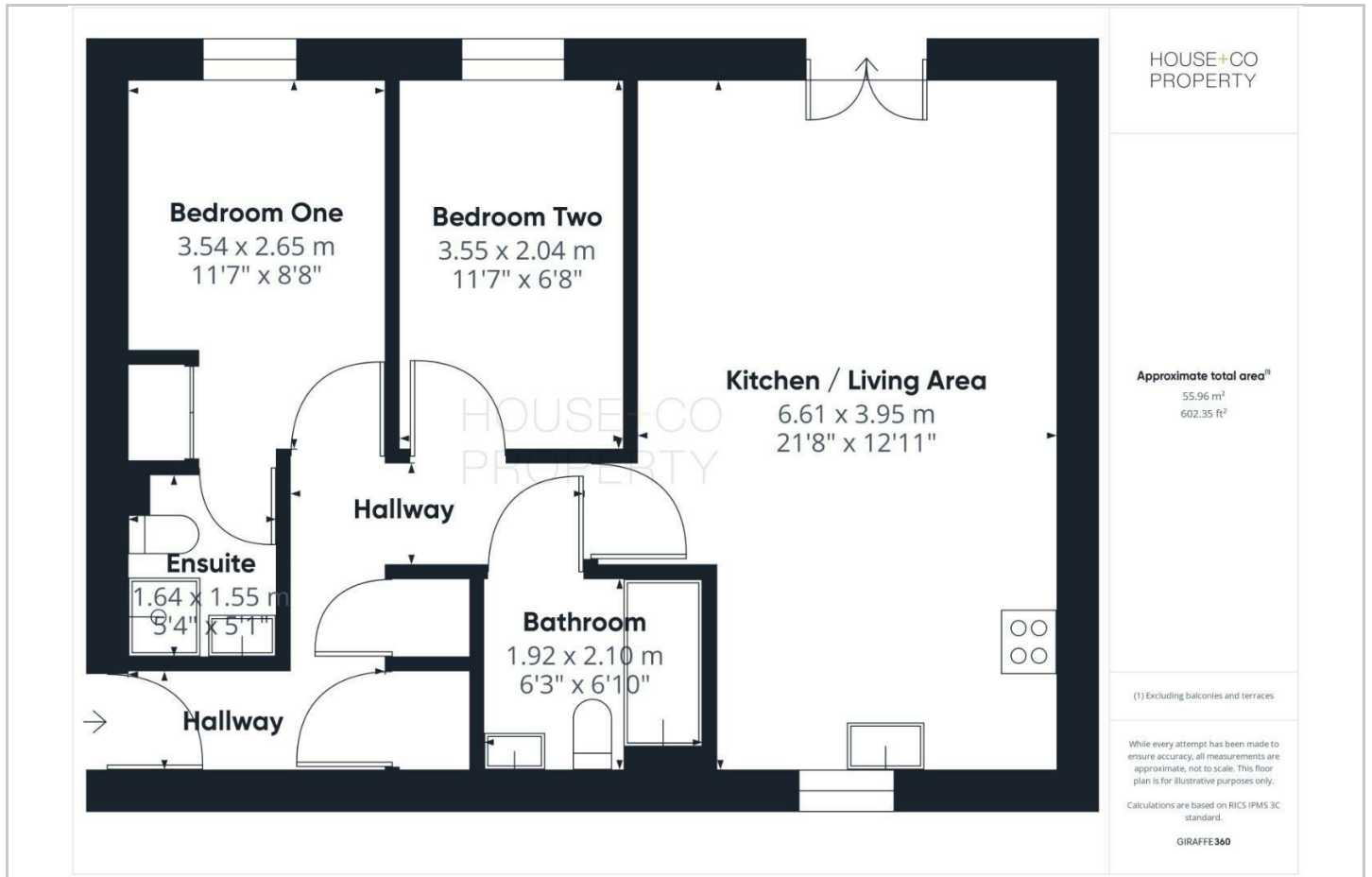
Beautifully presented modern two bedroom first floor apartment set in this popular development next to St George's Park. Modern living with great access to commuter routes makes this lovely home an ideal first time buy. The property comprises of communal entrance, hallway with storage cupboards, spacious and bright open plan living/dining with modern fitted kitchen with built in appliances and breakfast bar. The living area has plenty of light with its Juliette balcony. There are two double bedrooms, a family bathroom and further ensuite shower room. Further benefits include gas central heating, double glazing, allocated parking bay and communal bicycle store and well maintained communal gardens. 983 lease years remaining. Ground rent £221.80. Annual service charge. £1617.80.

- MODERN FIRST FLOOR FLAT
- ENSUITE
- OPEN PLAN LIVING
- MODERN KITCHEN
- ALLOCATED PARKING
- TWO BEDROOMS
- BATHROOM
- JULIETTE BALCONY
- BREAKFAST BAR

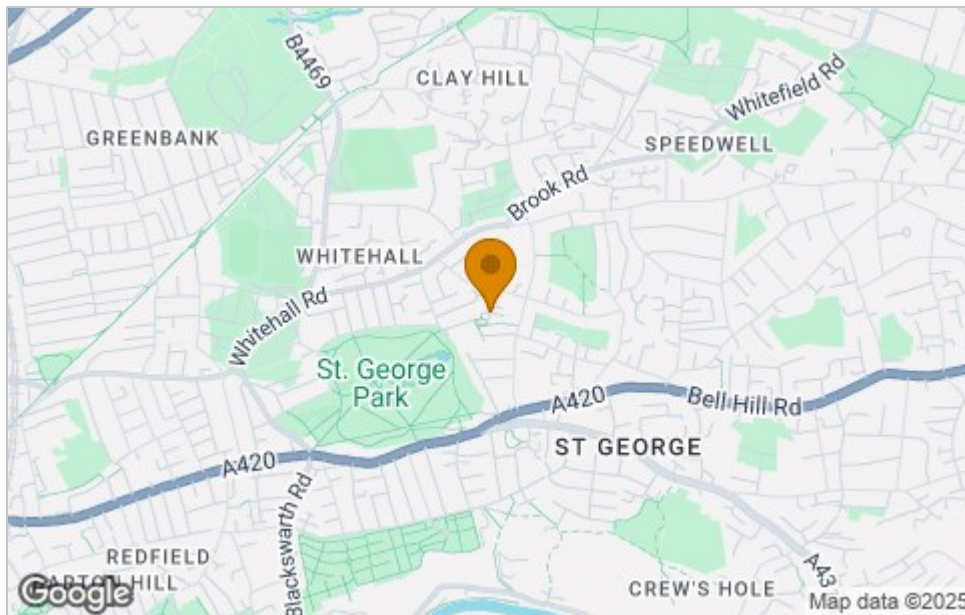




Floor Plan



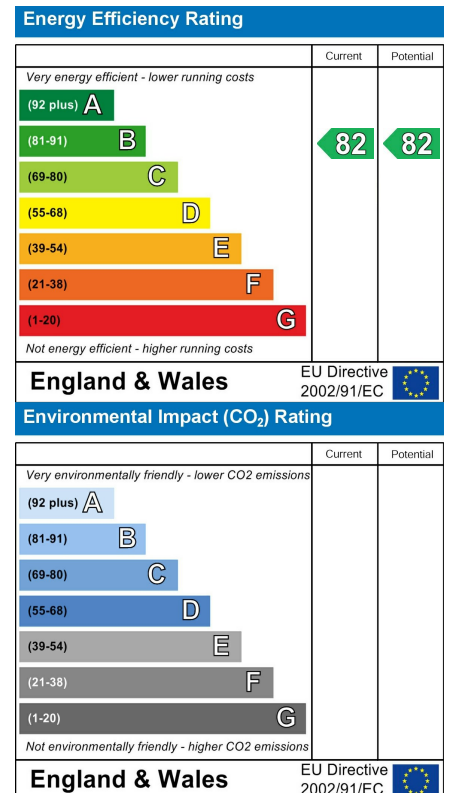
Area Map



Viewing

Please contact our House + Co Property (Sales) Office on 0117 907 0020 if you wish to arrange a viewing appointment for this property or require further information.

Energy Efficiency Graph



These particulars, whilst believed to be accurate are set out as a general outline only for guidance and do not constitute any part of an offer or contract. Intending purchasers should not rely on them as statements of representation of fact, but must satisfy themselves by inspection or otherwise as to their accuracy. No person in this firm's employment has the authority to make or give any representation or warranty in respect of the property.