



24 Salisbury Street

St. George, Bristol, BS5 8EE

Asking price **£335,000**



24 Salisbury Street



Description

Set close to St Georges Park and Church Road's cafes, bars and shops is this victorian style home with retained and enhanced period character including fireplaces and stripped and varnished floors and still giving scope for buyers to improve and add value.

Briefly comprising inner hallway, bay lounge, seperate dining room with stripped and varnished floors and kitchen to the ground floor.

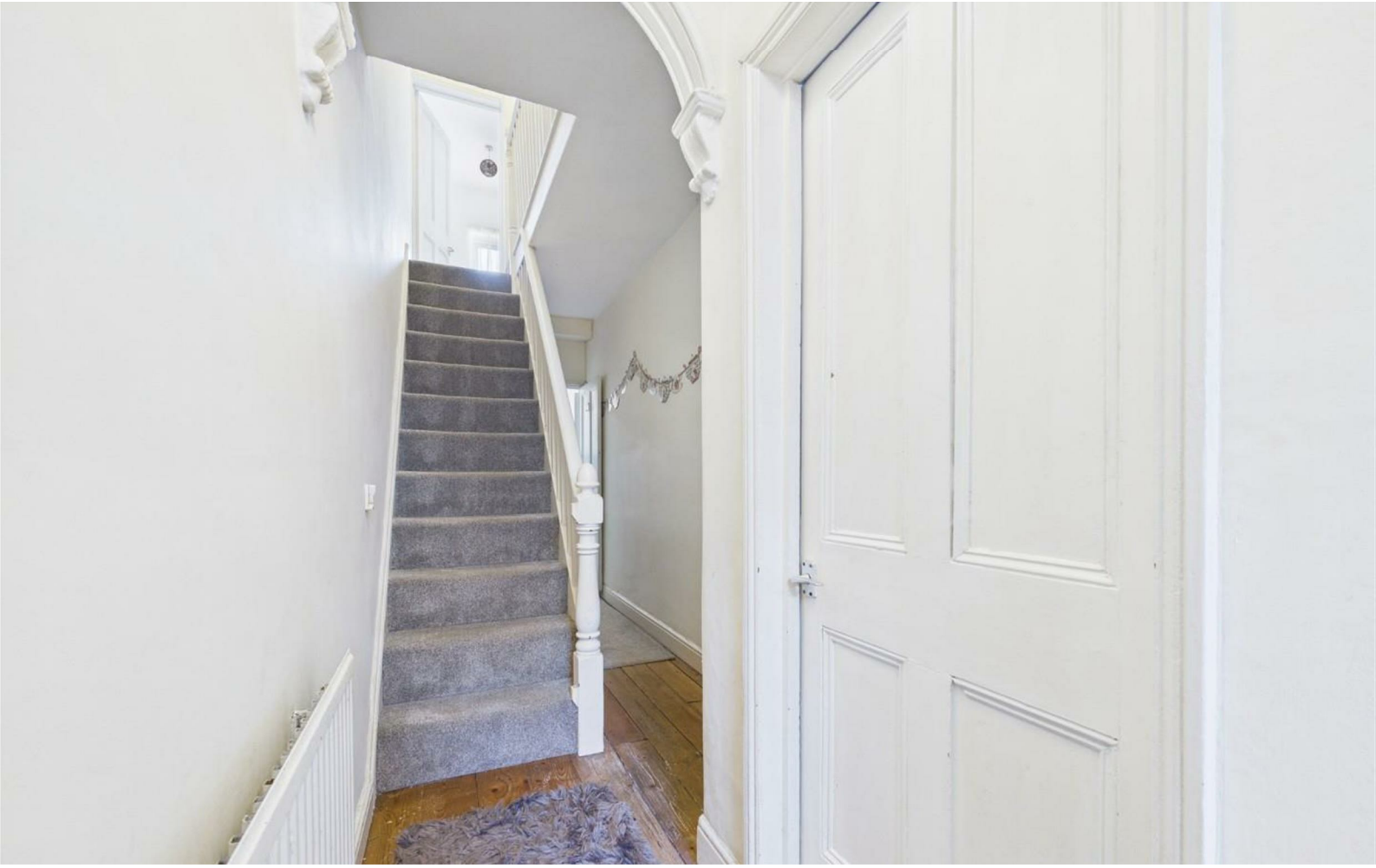
Above are 2 double bedrooms and modern fitted bathroom.

With double glazing, gas central heating, supplied by a combination boiler and an enclosed mature rear garden this is great house for first time buyers looking to stamp their mark on their new home situated in this popular location.

Offered with NO CHAIN check out the virtual tour and come and have a look !

- 2 BED VICTORIAN STYLE PROPERTY
- FITTED KITCHEN
- ENCLOSED MATURE GARDEN
- SCOPE TO IMPROVE AND ADD VALUE
- CLOSE TO CHURCH ROAD'S SHOPS, BARS AND CAFES
- 2 SEPERATE RECEPTION ROOMS
- MODERN BATHROOM
- DOUBLE GLAZED AND GAS CENTRAL HEATING
- NO CHAIN !
- GREAT LOCATION FOR ACCESS TO ST GEORGES PARK

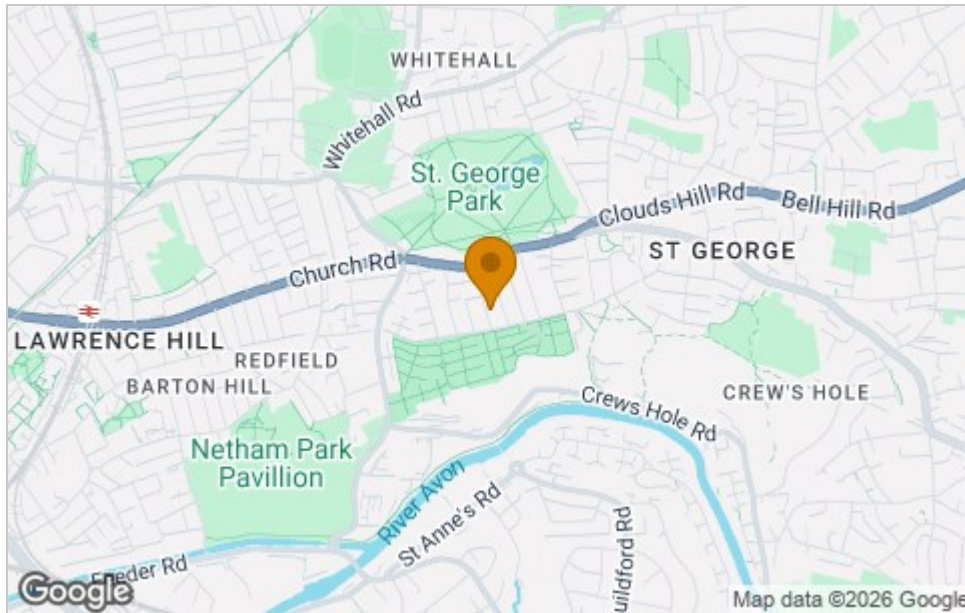




Floor Plan



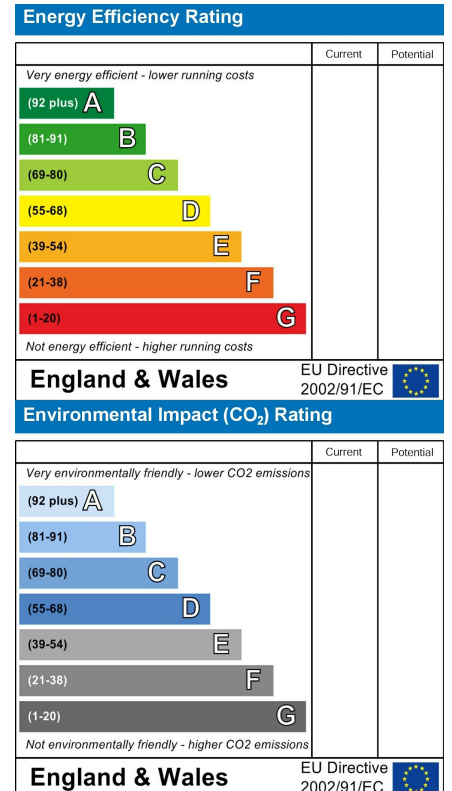
Area Map



Viewing

Please contact our House + Co Property (Sales) Office on 0117 907 0020 if you wish to arrange a viewing appointment for this property or require further information.

Energy Efficiency Graph



These particulars, whilst believed to be accurate are set out as a general outline only for guidance and do not constitute any part of an offer or contract. Intending purchasers should not rely on them as statements of representation of fact, but must satisfy themselves by inspection or otherwise as to their accuracy. No person in this firm's employment has the authority to make or give any representation or warranty in respect of the property.