



21 Freemantle Gardens

Eastville, Bristol, BS5 6SZ

Asking price £240,000



21 Freemantle Gardens



Description

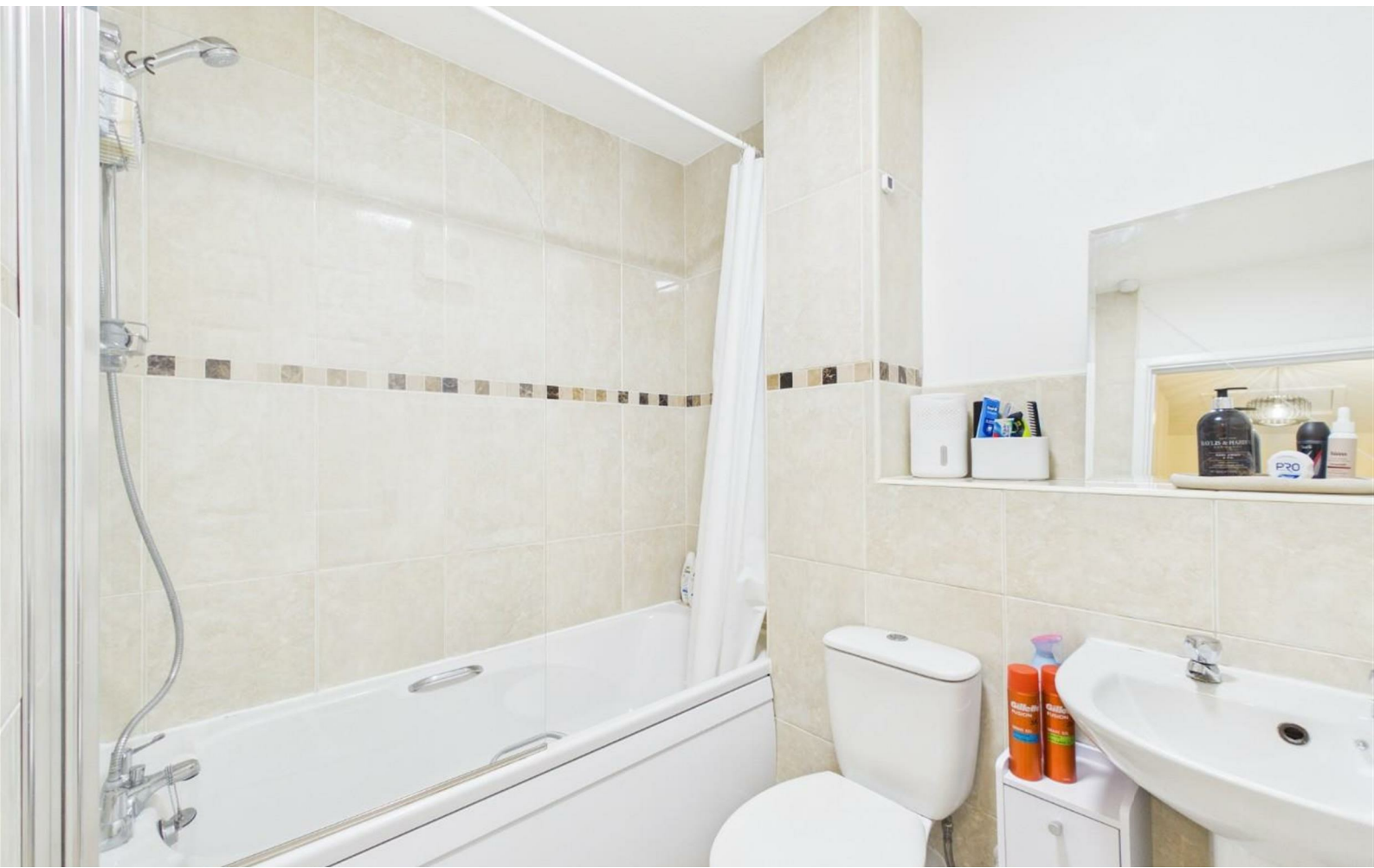
Welcome to this well-presented 2 bedroom first floor flat located near Eastville Park and only a stroll away from St. Mark's Road with great transport links into the city via buses and the Stapleton Road Train Station. Boasting a private garage and an allocated parking space, this gem is an ideal first time buy.

The property, much improved by its current owner, offers a spacious living room featuring a lovely Juliette balcony onlooking the communal gardens. The kitchen, fitted in 2023, offers a contemporary open plan kitchen diner feel. Also comprising of two bedrooms and a modern bathroom. Don't miss out on the chance to make this lovely property your new home. Call now to book a viewing !!

963 Years Remaining on the Lease. No Ground Rent. Monthly management fees in the region of £153.92.

- PRIVATE GARAGE
- ALLOCATED PARKING SPACE
- NEAR EASTVILLE PARK
- MODERN KITCHEN DINER
- NO CHAIN !!
- TWO BEDROOMS
- COMMUNAL GREEN SPACE
- LIVING ROOM WITH JULIETTE BALCONY
- MODERN BATHROOM
- DOUBLE GLAZING & ELECTRIC HEATING

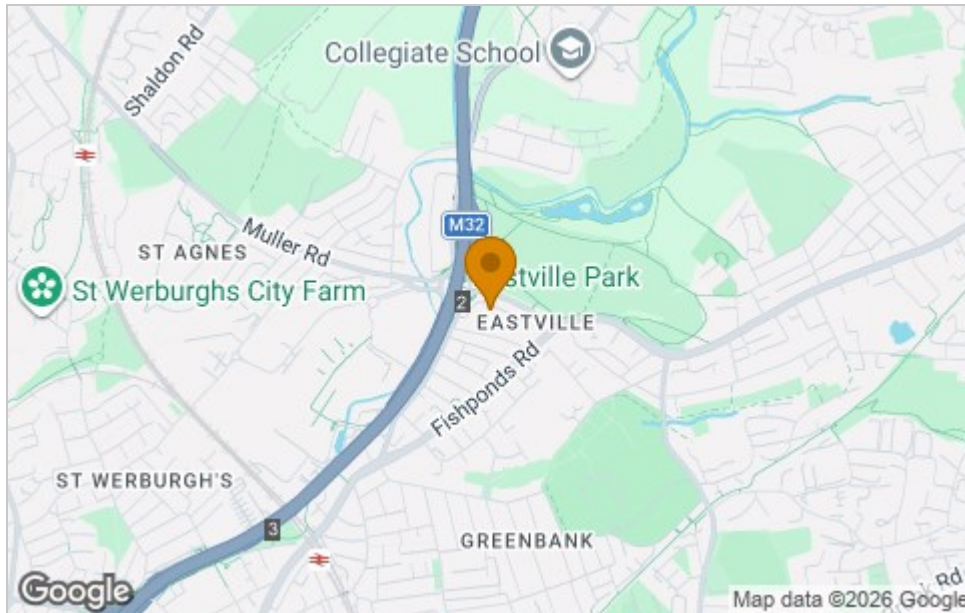




Floor Plan



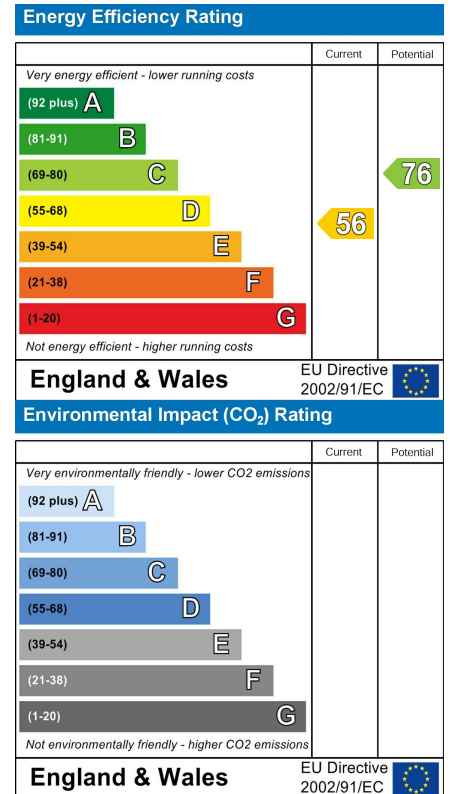
Area Map



Viewing

Please contact our House + Co Property (Sales) Office on 0117 907 0020 if you wish to arrange a viewing appointment for this property or require further information.

Energy Efficiency Graph



These particulars, whilst believed to be accurate are set out as a general outline only for guidance and do not constitute any part of an offer or contract. Intending purchasers should not rely on them as statements of representation of fact, but must satisfy themselves by inspection or otherwise as to their accuracy. No person in this firm's employment has the authority to make or give any representation or warranty in respect of the property.