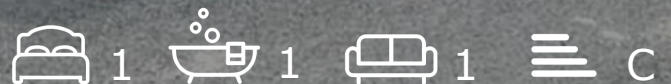




10 Frampton Court Victoria Avenue

Redfield, Bristol, BS5 9NW

Asking price £140,000



10 Frampton Court Victoria Avenue



Description

This top floor studio flat with secure allocated parking is set a short stroll away from Church Road's increasingly popular shops, cafes and bars along with the greenery of St George's Park and Netham playing fields close by.

With a communal hallway leading to the flat's private entrance the property has a spacious living/bedroom area with new carpet. There is a separate kitchen and modern fitted bathroom with double shower.

With Upvc double glazing, electric heating, an allocated secure parking space, pleasant southerly facing communal patio garden and much more these properties have traditionally been great for first time buyers and investors alike.

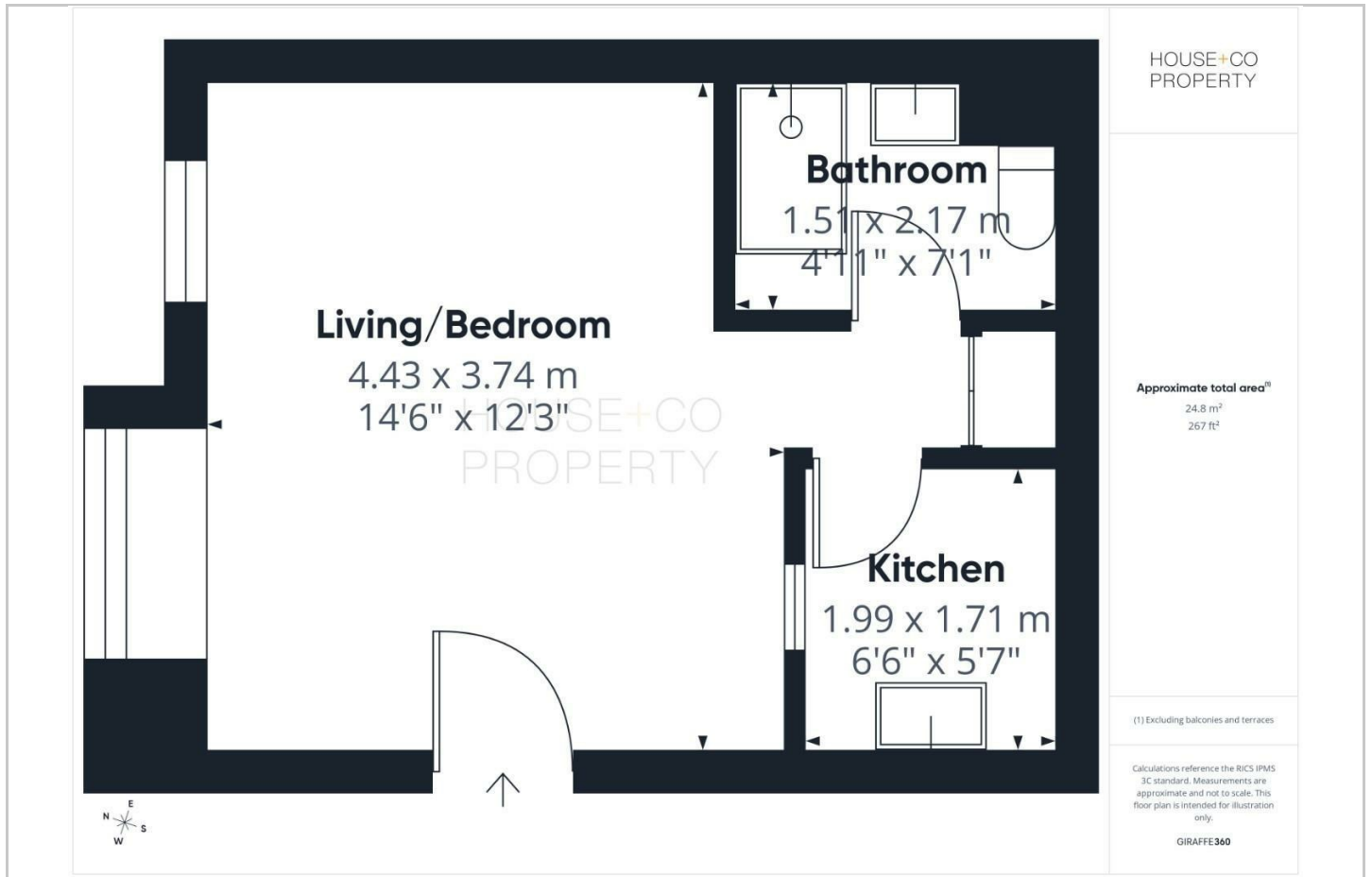
Set up on the remains of 999 year lease (959 years approx remaining) monthly management fees of £100 approx (£1,319.76 PA) and annual ground rent of £30 per annum.

- MODERN STUDIO APARTMENT
- OPEN PLAN LIVING
- KITCHEN
- ALLOCATED PARKING
- RECENTLY REFRESHED
- MODERN SHOWER ROOM
- LOVELY VIEWS
- NO CHAIN

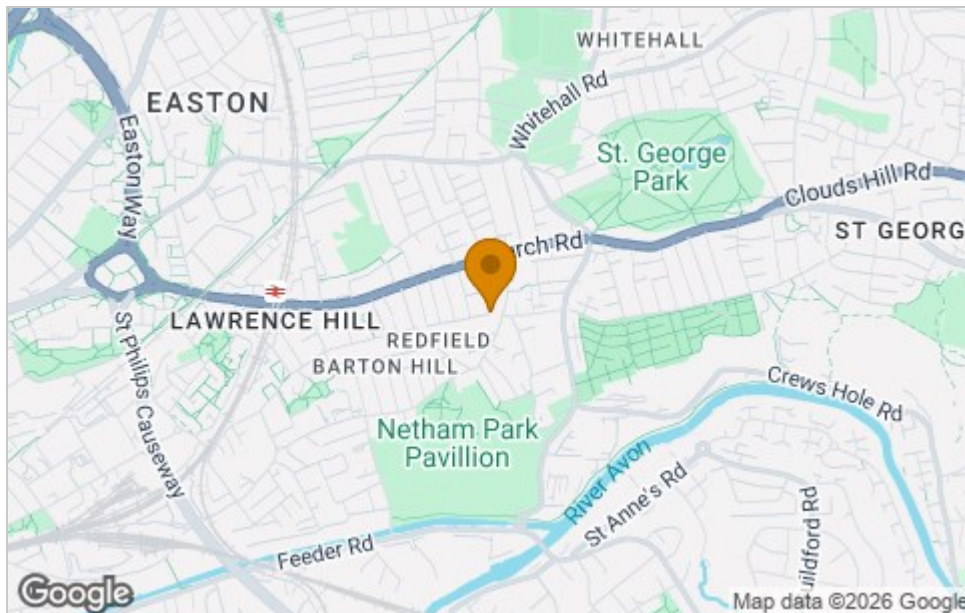




Floor Plan



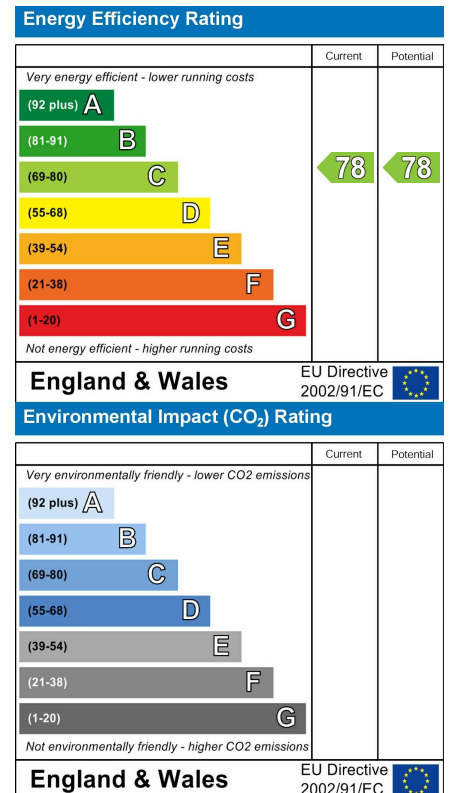
Area Map



Viewing

Please contact our House + Co Property (Sales) Office on 0117 907 0020 if you wish to arrange a viewing appointment for this property or require further information.

Energy Efficiency Graph



These particulars, whilst believed to be accurate are set out as a general outline only for guidance and do not constitute any part of an offer or contract. Intending purchasers should not rely on them as statements of representation of fact, but must satisfy themselves by inspection or otherwise as to their accuracy. No person in this firm's employment has the authority to make or give any representation or warranty in respect of the property.