

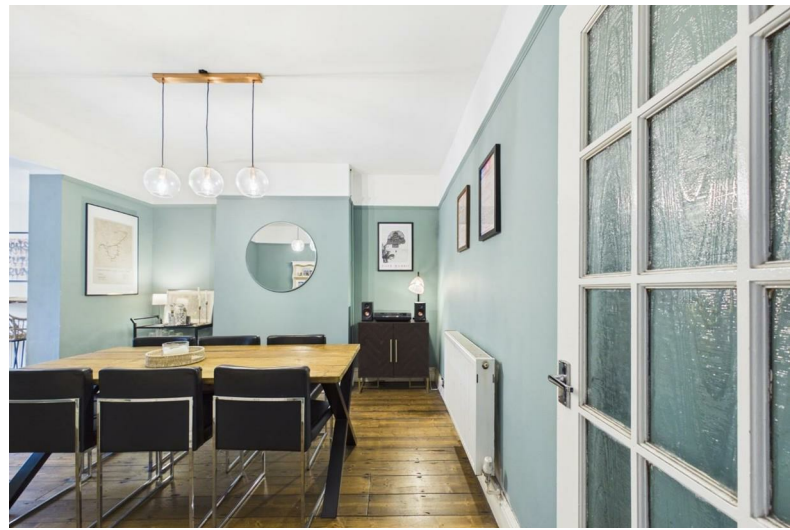


17 Rose Road
, Bristol, BS5 8EX

Asking price £395,000



17 Rose Road



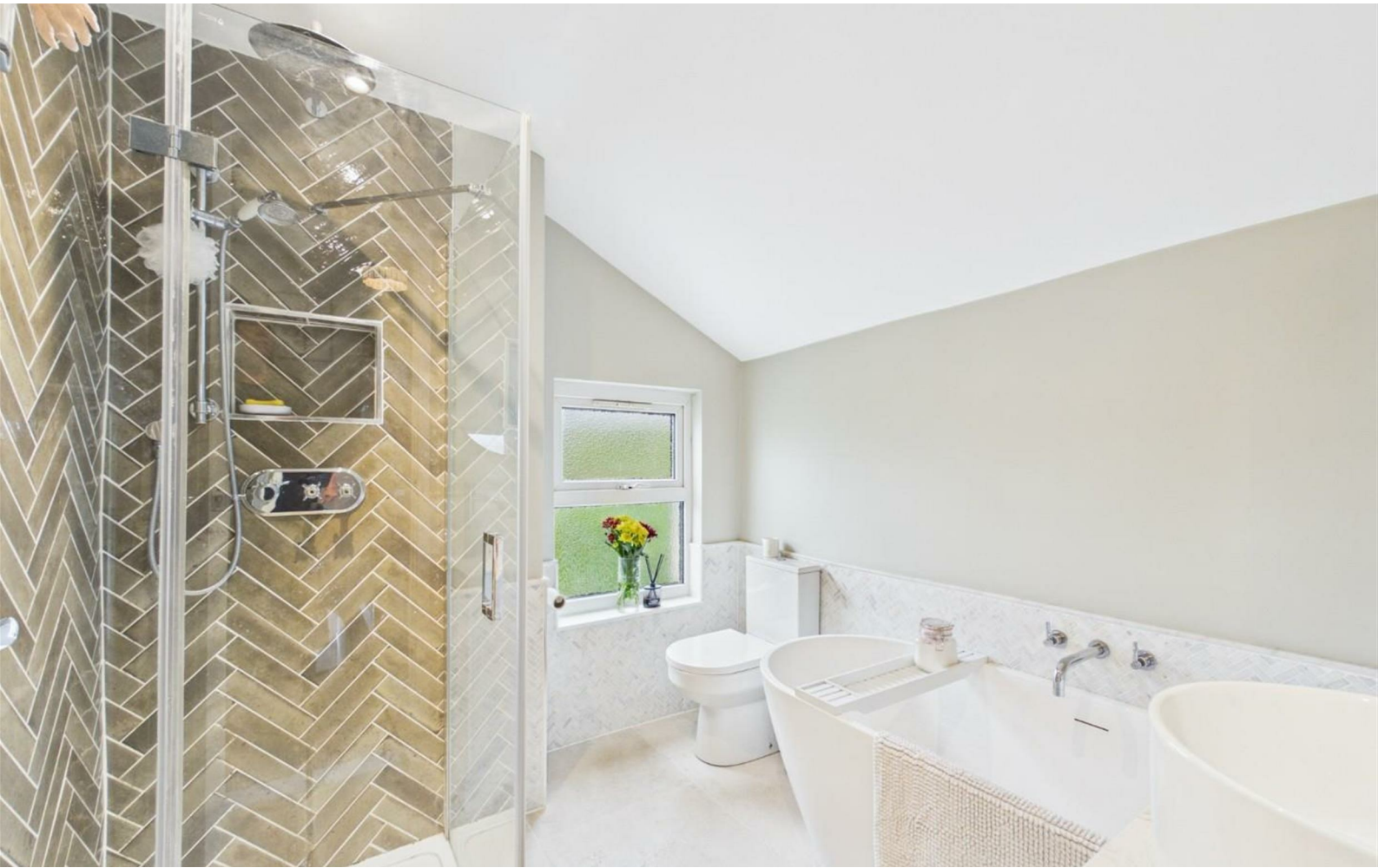
Description

Beautifully presented Victorian end terrace with OFF STREET PARKING located in a cul-de-sac in St George, close to St George's Park and Redfield's vibrant Church road with its many cafes, shops, delis and bars. This lovely home offers a spacious living arrangement and comprises entrance hallway, lounge to the front, dining room and a full width modern kitchen/breakfast room.

Upstairs are two great size bedrooms and a stylish bathroom with bath and separate shower. Further benefits include gas central heating and double glazing and a courtyard garden to the rear. A must see for anyone looking to move to the area. No Chain! Please call to view!

- VICTORIAN END TERRACE
- LOUNGE
- KITCHEN BREAKFAST ROOM
- COURTYARD GARDEN
- OFF STREET PARKING
- TWO DOUBLE BEDROOMS
- DINING ROOM
- UPSTAIRS BATHROOM
- CLOSE TO ST GEORGE PARK
- NO CHAIN

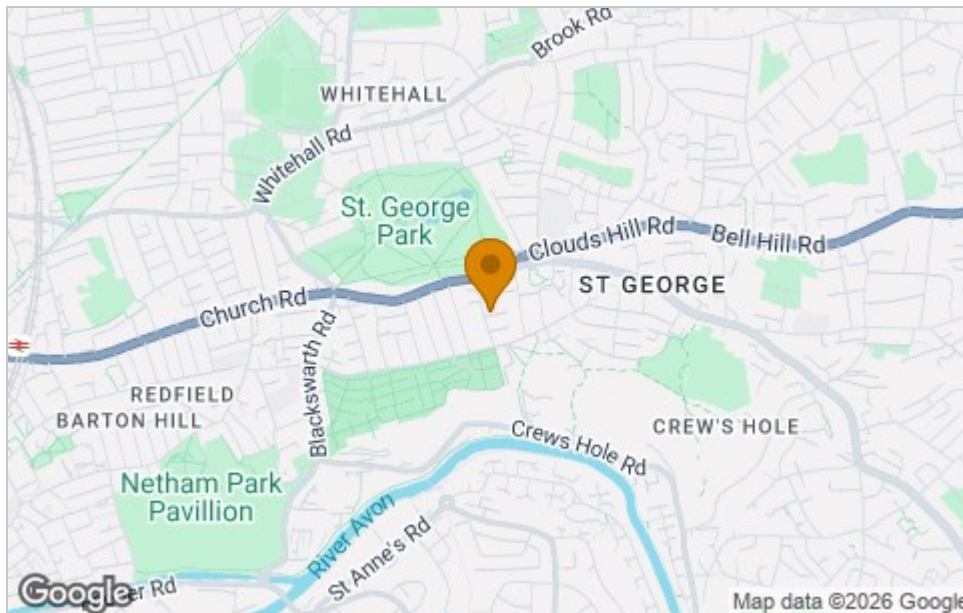




Floor Plan



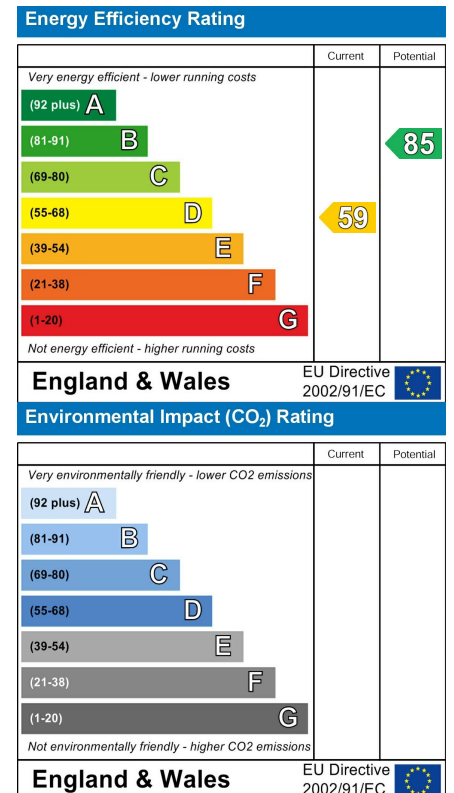
Area Map



Viewing

Please contact our House + Co Property (Sales) Office on 0117 907 0020 if you wish to arrange a viewing appointment for this property or require further information.

Energy Efficiency Graph



These particulars, whilst believed to be accurate are set out as a general outline only for guidance and do not constitute any part of an offer or contract. Intending purchasers should not rely on them as statements of representation of fact, but must satisfy themselves by inspection or otherwise as to their accuracy. No person in this firm's employment has the authority to make or give any representation or warranty in respect of the property.