

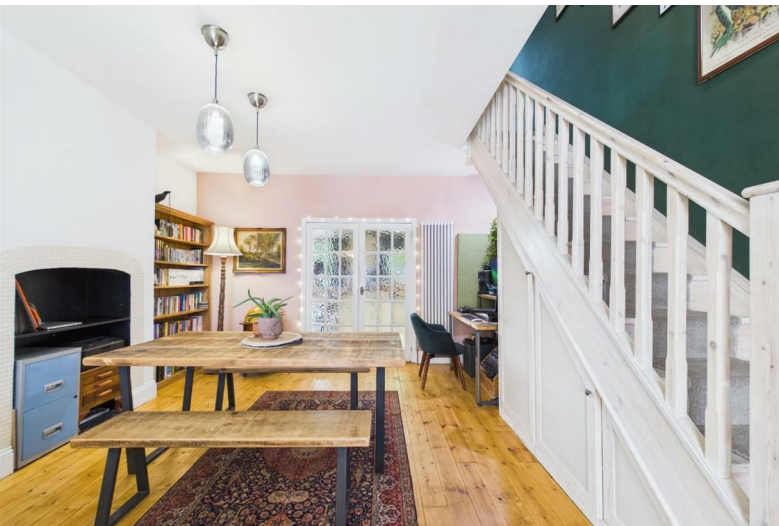


61 Hayward Road  
Barton Hill, Bristol, BS5 9PX

Asking price **£385,000**



# 61 Hayward Road



## Description

Lovely Victorian terrace located in Redfield and within walking distance of Lawrence Hill station, Netham Park and Church Road with its many independent shops, cafes and bars.

Stylish throughout this home offers a great open plan bayed living room with gas stove, opening into the dining space with bespoke under stair storage and workspace. There's a bright kitchen to the rear with breakfast bar and double doors into the garden.

Upstairs you'll find two great size double bedrooms along with a modern bathroom with separate shower cubicle. From the landing there is a fixed ladder rising to the loft which has velux windows and is used as a cinema space.

Outside to the rear is a great size garden with a raised deck and planters. This ready to move into house will appeal to buyers looking for their first home or upsizing in the area. Please call to view!

\*Please note that the loft has no building regulations\*

- VICTORIAN TERRACE
- OPEN PLAN LIVING
- UPSTAIRS BATHROOM
- COURTYARD GARDEN
- TWO DOUBLE BEDROOMS
- KITCHEN BREAKFAST ROOM
- LOFT SPACE
- NO CHAIN

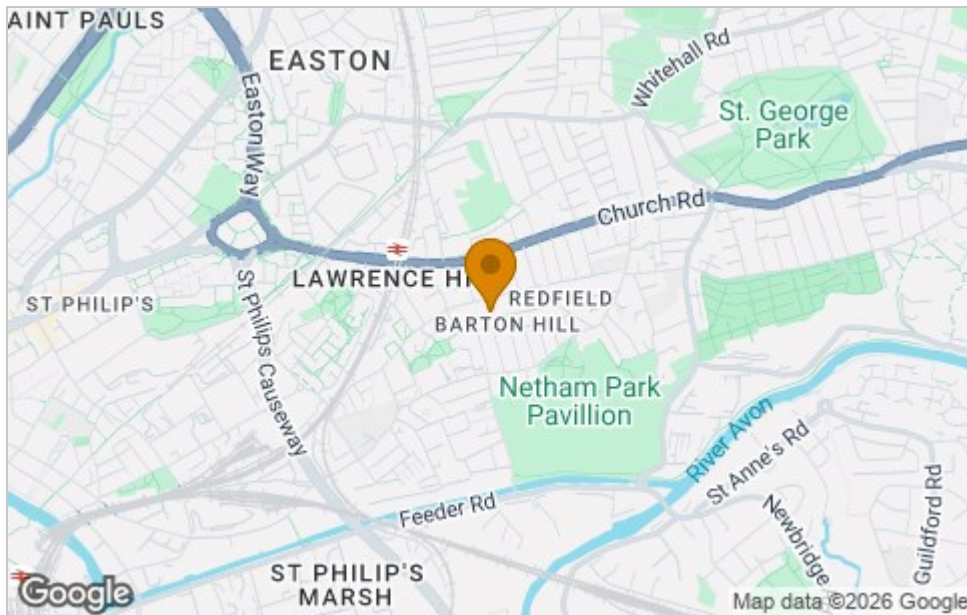




# Floor Plan



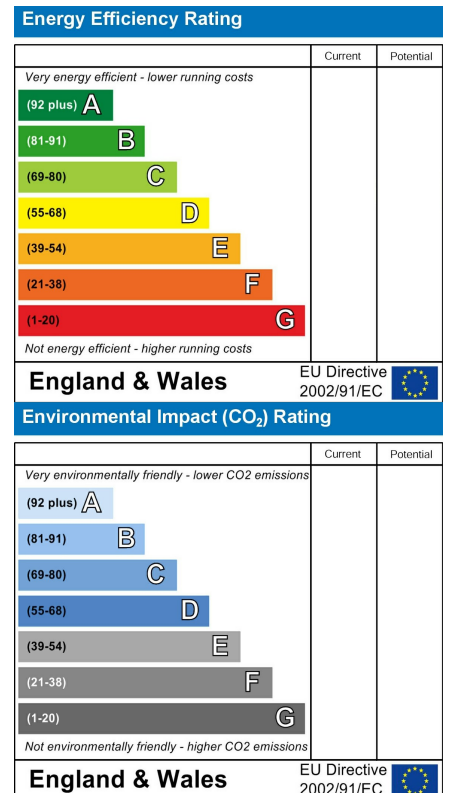
# Area Map



# Viewing

Please contact our House + Co Property (Sales) Office on 0117 907 0020 if you wish to arrange a viewing appointment for this property or require further information.

# Energy Efficiency Graph



These particulars, whilst believed to be accurate are set out as a general outline only for guidance and do not constitute any part of an offer or contract. Intending purchasers should not rely on them as statements of representation of fact, but must satisfy themselves by inspection or otherwise as to their accuracy. No person in this firm's employment has the authority to make or give any representation or warranty in respect of the property.